



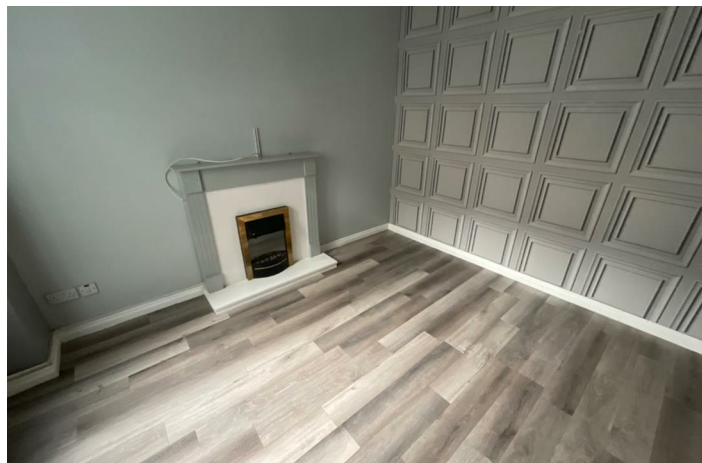
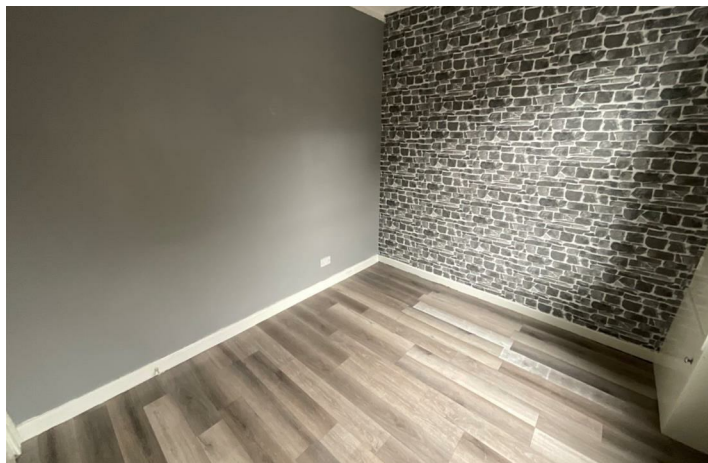
15 Ainsworth Avenue
Belfast, BT13 3EN

Per month

£750 Per month



Energy Efficiency Rating	Environmental Impact (CO2) Rating
A	A
B	B
C	C
D	D
E	E
F	F
G	G



15 Ainsworth Avenue

, Belfast, BT13 3EN

£750 Per month



A well presented and spacious townhouse which is sure to appeal to growing families and professionals alike.

Internally the dwelling comprises of an entrance hallway, two receptions, brand new fitted kitchen, classic white bathroom suite and three well proportioned bedrooms. Outside there is an enclosed yard to the rear.

The property further benefits from gas fired central heating and uPVC double glazing.

Situated on a beautiful tree lined avenue the house is conveniently located close to many leading shops and amenities including Ballygomartin Tesco and Woodvale Park and has a wealth of independent retailers on its doorstep. It also shares excellent transport links with Belfast City Centre with the closest bus stop located at the end of the street.



Road Map



Hybrid Map



Terrain Map



Floor Plan

VIEWING STRICTLY BY APPOINTMENT WITH OUR OFFICE

These particulars, whilst believed to be accurate are set out as a general outline only for guidance and do not constitute any part of an offer or contract. Intending purchasers should not rely on them as statements of representation of fact, but must satisfy themselves by inspection or otherwise as to their accuracy. No person in this firm's employment has the authority to make or give any representation or warranty in respect of the property.